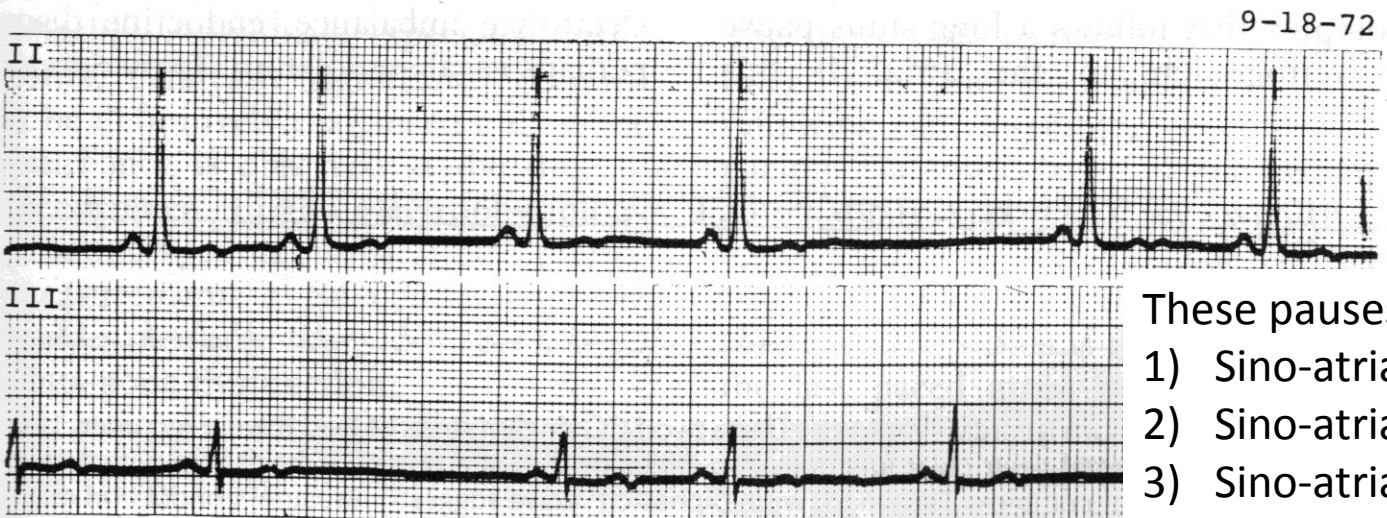
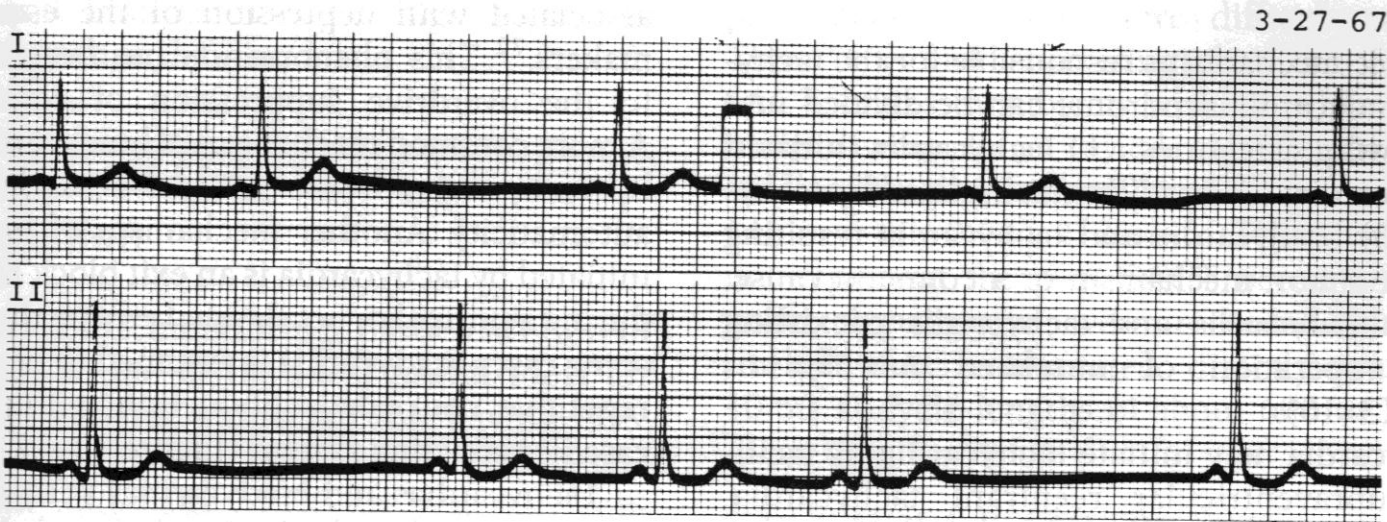


Case 9



These pauses are due to:

- 1) Sino-atrial block (1st degree)
- 2) Sino-atrial block (2nd degree)
- 3) Sino-atrial block (3rd degree)

Case 9

- Sino-atrial block (second degree, type II)

- Analagous to AVN block

- 1st degree and 3rd degree can't be diagnosed on surface ECG

- 2nd degree:

- Type I/Wenckebach has progressively short PP
 - Type II: pause is a multiple of PP (2x, 3x, etc)
 - 2:1 SA block looks like marked bradycardia

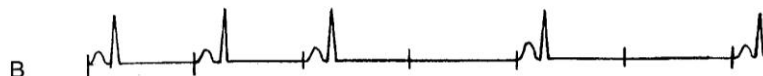
Normal



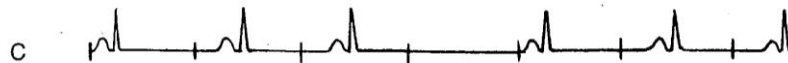
1° SA Block



2° SA Block



Wenckebach



3° SA Block



Case 9



Thanks!
